

From the Artistic Director



D. Duke

Dear Friends,

Another train ride, having spent the week in Washington, DC, rehearsing for and playing a memorial concert for British composer Nicholas Maw; you may remember WCM's 2005 festival celebrating his 70th birthday. Very sadly, he died last May after a long illness, and having lived in DC since 1984. Over that time, he

forged a strong friendship with the 20th (now 21st) Century Consort and they asked me to play with them when their own flutist became unavailable.

Four chamber works were performed, three of which involved me. Maw's music is profoundly expressive with a very wide dynamic range, and technically very demanding, so playing such pieces engages us all at a heightened level of brain, heart and lung coordination! It is only now, traveling north through vivid fall woods that the intense concentration is shed, and I can read just for pleasure the poems set in 3 of those pieces, one of which is "Two in the Campagna" by Robert Browning. Full of fleet movement and ecstatic descriptions of the Roman countryside, I hear the musical setting, too, and am reminded of Maw's extreme care in rendering the natural rhythm of syllables and pacing of sentences.

Such an emphasis in the setting of words is not a noticeable feature in much of the last 50 years of composition, but it IS in the work of Lee Hoiby, composer of "What Is the Light?" – which WCM performs on November 8th (see events inside). Setting various excerpts of Virginia Woolf's writings for a narrator and harpsichord – adapted by the composer from the original piano score – gives Kenneth Hamrick and me a great opportunity. I hope we'll see you in Livingston Manor!

Fall colors always mark such a clear change of season but before we look forward into winter, I want to say a heartfelt "THANK YOU!" to our volunteers for and sponsors of the 2009 Summer Festival, our fourth at the Eddie Adams Farm. The success resulting from WCM's "move" in 2006 has depended on these friends.

Lastly, we need your help: all state grant monies are on hold, including WCM's member item from Aileen Gunther. As a small organization committed to paying our bills, this puts us in a difficult position: WCM's mission (see left panel) informs all that we do, and it's the quality of our work that allows me the confidence to ask for your support. Enjoy looking back at this year's festival and reading about the next fascinating school project, and with the end of the year coming up, I hope that you will support us with a tax-deductible donation.

Best wishes,

Judith Pearce

*Weekend of Chamber Music is a
501(c)3 Non-Profit organization, supported by
public funding from ...*



The New York State Council on the
Arts, a State Agency.

Assemblymember Aileen Gunther, 98th A.D.
2009/10 Member Item

The Thalia & George Liberatos Foundation

And by...

The Eddie Adams Farm
Sullivan County Arts & Heritage Grant
Sullivan County Legislature

and the generosity of our individual patrons.

The WCM Mission

The Weekend of Chamber Music (WCM) seeks to present chamber music as a vital art to a broad cross section of the Sullivan County, NY community and beyond, reaching out to engage people of all ages and cultures. Colorful programming designed to stimulate the listeners' imaginations; a focus on high quality performance, a wide range of instrumentation, and lively communication with the audience through the spoken word, are features of every concert, workshop, coaching activity and collaboration with the community at-large.

Donations are tax deductible.

EIN 16-1518575

CONTACT

info@WCMconcerts.org / 845-932-8527

WCMconcerts.org

Newsletter by Treehouse Arts

Become a Fan - Visit us on Facebook!

W^{The}**WEEKEND**
of **CHAMBER**
MUSIC

PO Box 304
Lake Huntington, NY
12752

Fall 2009
Newsletter

W^{The}**WEEKEND**
of **CHAMBER**
MUSIC



"The Russian Connection" - A look at the 16th WCM Summer Festival
 Downtown Arts Day & Bicentennial Concert open Festival on July 12.
Left: Judith Pearce introduces David Trombley & Annie Hat.
Below: a crowd of 132 attended, & Matt Sullivan & Dan Grabois warm up for Lee Hoiby's Diversions Quintet.



Café Concert Tuesday at Settlers Inn -
 Caroline Stinson & Ken Hamrick rehearse beforehand.
Gala Saturday at Eddie Adams Farm -
 Nurit Pacht, Tannis Gibson & Caroline Stinson rehearse the Shostakovich Trio at the Eddie Adams Farm.



Festival Interns impress!
Left: Emma Laufersweiler, Jessica Nesin, Aimee Pelosi, Marina Lombardi & Meghan Kocijanski, take a bow after a coaching demonstration & performance of "Simple Gifts." **Right:** Interns with Artist Coaches, Mark Rush, Ken Hamrick, Marija Stroke, Judith Pearce & Tawnya Popoff.



Gala Saturday -
 Rehearsing the Prokofiev Quintet are Mark Rush, Tawnya Popoff, Roger Wagner, Maureen Hurd and Matt Sullivan (left).
Sunday at the Farm -
 Composer Bruce Adolphe narrated "Zephyronia" on closing day at the Eddie Adams Farm (right).



School News

Artist Coaching & A-in-E projects

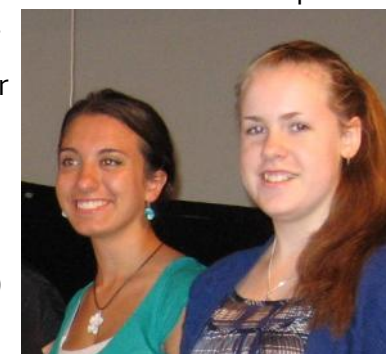
The 2009 - 2010 school year Arts-in-Education plans include chamber music coaching of the student ensembles, now in its 13th year at Monticello High School, and the Restoration Music Project.

The project began in Sept. with a trip by MHS students to the Mid-Hudson Bridge, where they learned about its restoration & listened to composer Joseph Bertolozzi's "Bridge Music." During the rest of the year, they will spend time restoring the St John Street Theatre in Monticello for this project, and they will identify & analyze acoustic properties, and sample different sounds produced as a result of the restoration process. Facts, personal stories and a performance list on the history of the St John Street Theatre will be gathered, & students will study the theater's architecture in the context of the building's historic period. The restored theater will be unveiled at a program in June when students present their work.

WCM artists working with the students this year are Allen Blustine, Kenneth Hamrick, Judith Pearce, Matt Sullivan and Andrew Waggoner.

New Scholarship Funds in 2009

In addition to the Rovitz Scholarship that WCM presents each year (see below), patron & board member Ellen Nesin provided funding for two other students this year in the forms of The Eugene D. Nesin Scholarship, and a one-time donation to the Summer Internship Fund in memory of her late husband. The first Monticello High School student to receive the Nesin Scholarship was Jessica Nesin (left), their daughter, & the Summer Internship donation funded Meghan Kocijanski's (right) participation in the 2009 Summer Festival.



Coming Events

Nov. 8 - Catskill Art Society, Livingston Manor

Weekend of Chamber Music presents Lee Hoiby's *What Is the Light?* for narrator and harpsichord, at 2 pm Sunday Nov. 8 in cooperation with the Catskill Art Society, Livingston Manor. Judith Pearce narrates, and Kenneth Hamrick performs on harpsichord.

Notes on *What Is the Light?*

Virginia Woolf's extensive correspondence and life-long diary engulf and almost supplant her importance as a novelist. Here, passages chosen by a semi-random process from autobiographical writings, diaries, letters, essays and imaginative fiction contemporaneous with *The Waves*, her most stylistically radical work, are integrated with a suite of interludes for harpsichord, written as reflection, response and evocation. The work was commissioned in 1994 by the Unterberg Poetry Center of the 92nd Street YM-YWHA for Claire Bloom and Brian Zeger.

Admission is \$10 general admission; \$8 for CAS members. For information call 845-436-4227.

June TBA - Music in the Barn, Bethel

Annual fundraiser supports our Artist Coaching & Arts-in-Education Projects. The evening includes buffet supper, wine, & concert followed by dessert & coffee on the terrace.

July 11 to 25 - Summer Festival - Save the Dates!

Gala Saturdays, Café Concert, MusicTalks! & much more.

The 2009 Stephen Rovitz Chamber Music Scholarship

recipients are Mary Setren (left) and Daria Coney (right).



The June '09 Monticello High School graduates participated in WCM's Artist Coaching Project at MHS as members of its Chamber Music program.