

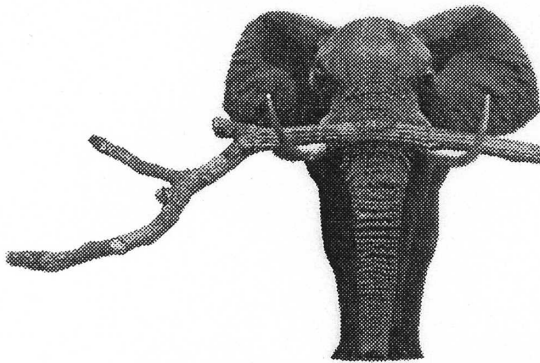
W^{The}
WEEKEND
of **C**
HAMBER
MUSIC

ARTISTIC DIRECTOR: JUDITH PEARCE

The third in a series of Sunday concerts

MARCH 6TH 2005

2:00 P.M.



SUNDAYS
at
BIG TWIG

The music of
JOHANN SEBASTIAN BACH

Evelyne Crochet
pianist

"Musical to her fingertips and
endowed with an impeccable
keyboard technique."

—THE LONDON TIMES

Judith Pearce
flute

".....a rare and
beautiful performer..."

—THE NEW YORKER

General Admission \$15 • Senior Citizens \$12
Children / Students Under 18 FREE

INFORMATION: 845-932-8527 or TICKETS: 845-932-8414

ON THE WEB:
www.wcmconcerts.org

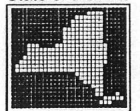
Big Twig Studio, 855 County Route 93
(Approximately 1 mile SW of Tennenah Lake)

Reception to follow concert

The Weekend of Chamber Music
is a 501(c)3 Non-Profit Organization.

This series is made possible in part with public funds
from the New York State Council on the Arts, a State Agency.

State of the Arts



NYSCA